



# Seashaw Ship Management

The Best Crew Management and Marine Services Company

[www.seashawmarine.com](http://www.seashawmarine.com)



## **B.E / B.Tech. Marine Engineering (4 Years)**

### **Educational Qualification**

10+2 (PCM 60%) / Diploma 50% and 50% in English in 10<sup>th</sup> or 12<sup>th</sup>.

### **Age**

17 to 25 years

### **Medical Standards**

Candidates should be medically fit for sea service according to D.G. Shipping rules with eye sight should be  $\pm 2.5$  without colour blindness.

### **Growth Chart**

4 years Pre sea training  
6 months as Junior Engineer onboard  
12 Months as a 4<sup>th</sup> Engineer  
Obtain Class 1 COC  
2<sup>nd</sup> Engineer and later Chief Engineer



# B.Sc. Nautical Science (3 Years)

## Educational Qualification

10+2 (PCM 60%) Aggregate and 50% in English in 10<sup>th</sup> or 12<sup>th</sup>

## Age

17 to 25 years

## Medical Standards

Candidates should be medically fit for sea service under standard norms of D.G. Shipping rules eye sight should be 6/6 without colour blindness.

## Growth Chart

3 years pre sea training

As a deck cadet on board ship (12 months)

2<sup>nd</sup> Officer (Certificate of Competency)

After 18 months as 2<sup>nd</sup> Officer, Chief Officer

After 18 months Captain

SEASHAW  
SHIP MANAGEMENT





## Graduate Marine Engineering (1 Year)

### Educational Qualification

Only Mechanical Engineering or Naval Architecture graduates are eligible to apply for this training programme. Aspirants should also scored 50% in the final year.

### Age

Candidates age should not be exceeded above 28 years at the time of enrollment.

### Medical Standards

Candidate should be medically fit for sea service with eyesight  $\pm 2.5$  without colour blindness.

### Growth Chart

Trainee Engineer as 8 months  
Obtain 4<sup>th</sup> part 'B' certificate of competency  
th 12 Months as a 4<sup>th</sup> Engineer  
Obtain Class III  
18 Months as a 3<sup>rd</sup> Engineer, as a 4<sup>th</sup> Engineer  
Class 2<sup>nd</sup> - Chief Engineer



# Trainee Marine Engineering - TME (2 Years)

## Educational Qualification

Degree or Diploma in Mechanical Engineering / Naval Architecture

## Age

It should not be exceeded more than 28 years at the time of enrollment.

## Medical Standards

Candidates must be fit for sea service with eye sight  $\pm 2.5$  without colour blindness.

## Growth Chart

6 months onboard obtain class

4<sup>th</sup> Engineer COC

3<sup>rd</sup> Engineer

2<sup>nd</sup> Engineer

Chief Engineer

**SEASHAW**  
SHIP MANAGEMENT





## Diploma in Nautical Science (1 Year)

### Educational Qualification

10+2 (PCM with 60%) with 50% marks in English (either in 10<sup>th</sup> or 12<sup>th</sup>)

### Age

Candidates should not be more than 25 years at the time of enrollment.

### Medical Standards

Candidates should be medically fit for sea service with eye sight of 6/6 without colour blindness.

### Growth Chart

18 months onboard as Deck Cadet with DLP obtain  
2<sup>nd</sup> Officer Certificate of competency  
18 months as 2<sup>nd</sup> officer  
obtain chief officer  
certificate of competency  
12 months as chief officer obtain COC



# Electro Technical Officer - ETO (4 Months)

## Educational Qualification

Diploma or Bachelor's degree in Electrical, Electronics / Electrical and Electronics / Instrumentation Engineering / Tele Communication / Communication. Candidate must have completed 10+2 with Physics, Chemistry, Maths and English as a subject.

## Age

Candidate should not be more than 35 years at the time of enrollment.

## Medical Standards

Candidates should be medically fit for sea service with eyesight of  $\pm 2.5$  without colour blindness.

## Growth Chart

6 months onboard as trainee ETO obtain ETO COC and work as Electrical Officer onboard.

**SEASHAW**  
SHIP MANAGEMENT





## **Oriental Course for Catering Personnel (OCCP)**

### **Educational Qualification**

Degree or Diploma in Hotel Management from recognized board / University.

### **Age**

18 to 25 years

### **Medical Standards**

Candidates must be fit for sea service with eye sight 6/12 and 6/9 in better eye without colour blindness.

### **Growth Chart**

1 year work as helper (utility)

Steward

Asst. Cook

Chief Cook

**SEASHAW**  
SHIP MANAGEMENT



# General Purpose Rating (GP Rating)

## Educational Qualification

Minimum 10<sup>th</sup> pass with 40% marks in English as a subject

## Age

17 to 25 years

## Medical Standards

Candidates must be fit for sea service with eye sight 6/6 without colour blindness and should be physically fit for sea service according to D.G. Norms.

## Growth Chart

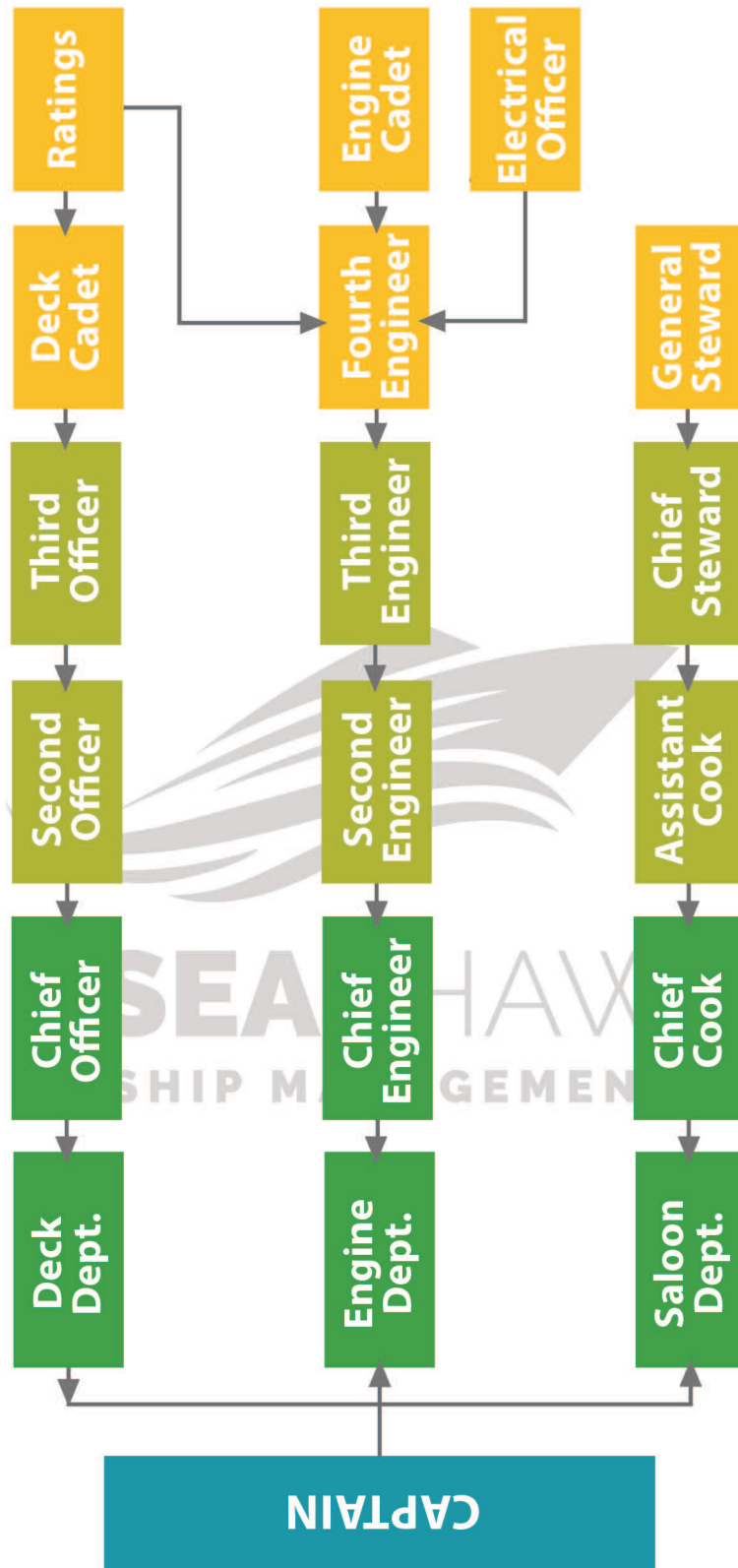
6 months as Trainee O.S. / T.S. A.B After 18 months obtain N.C.V. 18 months onboard as N.C.V.

**SEASHAW**  
SHIP MANAGEMENT



# CAREER FLOW CHART

Seashaw Ship Management  
www.seashawmarine.com





# Saloon Rating (6 Months)

## Educational Qualification

Minimum educational qualification is a pass in the S.S.C / 10<sup>th</sup> or its equivalent exam from any recognized board. Aggregate/ overall percentage must not be less than 40% and in ENGLISH subject minimum required is 40% either in 10<sup>th</sup>/12<sup>th</sup> exams.

## Age

Maximum age limit is 25 years at the time of commencement of course.

## Medical Standards

Minimum Height-157 cms, Weight-48 kgs.

Should be physically fit for sea and should meet the medical standards laid by the Director General of shipping.

## Growth Chart



SALOON RATING CAREER PATH



## Eligibility For Cruise Jobs

The very basic qualification is a diploma from a catering college and 1-2 years experience in the hotel industry (preferably in a 5-star hotel). For kitchen positions, you need to have experience in a continental kitchen (hot or cold). Most cruise line jobs, especially in the hotel department, are for those below 30 years of age. You also need to be fluent in English and able to communicate effectively. Other basic requirements are that you need to be healthy and fit to manage the long hours on your feet.

You also need to have a strong sense of personal hygiene and grooming – long hair is discouraged due to strict hygiene standards maintained on cruise ships, and so are visible tattoos and piercings (excepting ear lobes).

To help you succeed in your job, remember -

- ▶ Attitude is everything!
- ▶ You need to be hardworking and motivated to succeed.
- ▶ You need to enjoy working with people as you will be interacting round the clock with people of many nationalities and personalities.
- ▶ You need to be a team player – you will realize that the enormous cruise ship operations run like a smooth machine only through discipline and cooperation.
- ▶ You need to be accommodating and adaptable to the new experiences that come with working in such a different environment than the one you are used to.



# Certificate Course in Food and Beverage Service

## Description

The 3 month Certificate course in Food & Beverage Service is an highly specialized intensive cruise oriented food & beverages service program , aimed at developing careers in cruise line . The course provides specialized hands-on training for achieving highest standards of f&b services, including hygiene and sanitation as required by the United States Public Health and menu knowledge. Waiters/waitresses are considered front – line guest service staff and are therefore also given training in developing excellent communications and inter-personal skills.

## Duration

3 Months

## Age Limit

18 - 28 years





## **Advanced Diploma in Galley Operations - Culinary**

### **Description**

This course is aimed at graduates passing out from hotel management and catering institutes, who are keen to make a career as chef in the hot continental kitchen. F&B Service background students who are interested to switch over to kitchen are also eligible. The curriculum focuses right from basics, intermediate to the advanced level in the hot continental kitchen. It also includes orientation to on-board living and working, as well as the critically important safety, hygiene and sanitation measures that have to be complied with on board cruise ships.

### **Duration**

3 Months

### **Age Limit**

18 - 28 years



# Advanced Diploma in Galley Operations Bakery & Patisserie

## Description

This course is aimed at graduates passing out from hotel management and catering institutes, who are keen to make a career as chef in the pastry & confectionery section. F&B Service background students who are interested to switch to kitchen are also eligible. The curriculum focuses right from basics, intermediate to the advanced level in the pastry making. It also includes orientation to on-board living and working, as well as the critically important safety, hygiene and sanitation measures that have to be complied with on board cruise ships.

## Duration

3 Months

## Age Limit

18 - 28 years





## Certificate Course in Galley Stewarding

### Description

Galley stewarding is the first step in the hierarchy of cruise ship kitchens and their primary job is to keep the galleys and equipment clean and sanitised. It is a very and specialized job important job as cruise lines have to pass stringent hygiene and sanitation tests administered by the authorities. Galley stewards can rise both in kitchen and F&B service departments. Candidates for this course need to hold a minimum education of standard 10<sup>th</sup> / 12<sup>th</sup>, with minimum 21 years of age. Candidates from hotel schools or with hotel experience from F&B Service back ground are also preferred. This course focuses on the vessel familiarization, sanitation systems, chemical usage and handling, United States public health norms , safety on board.

### Duration

5 Weeks

### Age Limit

21 years



# Diploma in Professional Cookery (DPC)

## Description

This 12 month course in professional cookery is affiliated to BSS promoted by Govt. of India, includes 6 months of industrial exposure training at star hotels. Candidates of 10<sup>th</sup> / 12<sup>th</sup> pass or fail are eligible for this intensive practical oriented program meant for a strong foundation in culinary skills. The curriculum includes intensive practical training in gastronomy right from fundamentals to intermediate and till advanced level in culinary. Safety, Hygiene and Sanitation, Food Science and Nutrition, Communication Skills and Personality Development, Fundamentals of Computers & Supervisory Management are other ancillary subjects of this course.

## Duration

12 Months

## Age Limit

18 - 25 years



## CHOOSE A SEAGOING CAREER!

Seashaw Ship Management is inviting you to join the Maritime Academy for a career as an Nautical Officer and Marine Engineering or as an Electro Technical Officer.

### IF YOU ARE

- BSc graduated in Mechanical or Electrical Engineering;
- Younger than 25 years of age at the time of enrollment;
- Have good skills of both verbal and written English;
- Medically fit to serve at sea according to ILO/IMO guidelines;
- Interested in an international career with world renowned shipping companies;

**Join  
Merchant Navy  
and Make Your  
Future Bright**

**– Nitesh Shaw**  
Director

Apply today using  
the application form on  
**[www.seashawmarine.com](http://www.seashawmarine.com)**  
or scan the QR code below



### GET IN TOUCH:

#### **Seashaw Ship Management**

21, Dobson Road, Jai Matadi tower,  
4<sup>th</sup> floor, Room No. 406, Howrah,  
West Bengal 711 101, India  
[www.seashawmarine.com](http://www.seashawmarine.com)  
[info@seashawmarine.com](mailto:info@seashawmarine.com)

**+ 91 - 62901 15957 / 84438 47180**

designed by

**RNGroup's**  
The Complete Solutions

Contact : + 91 - 8981897357 / 8013315311  
Mail : [rngroups2017@gmail.com](mailto:rngroups2017@gmail.com)

